

TECHNICAL DATA SHEET - G&G Bag HOUSE FILTER

| | |
|---------------------|-----------------------------|
| Filter type: | G&G-Bag-HOUSE-9-10-152-40-A |
| Producer: | G&G filtration CZ, s.r.o. |

Parameters of filtered gas

| | | |
|----|----------------------------------|--------------------------|
| A1 | Operating amount of filtered gas | 10 400 m ³ /h |
| A2 | Operating temperature | 20 °C |
| A3 | Amount of filtered gas (0°C) | 9 700 Nm ³ /h |
| A4 | Inlet dust concentration | 300 g/m ³ |
| A5 | Operating pressure drop | 1 200 Pa |
| A6 | Maximum pressure drop | 2 200 Pa |

Filter media parameters

| | | |
|----|-----------------------------------|----------------------|
| B1 | Shape of filter medium | round hoses |
| B2 | Type of filter medium | m-Aramid |
| B3 | Density of filter medium | 530 g/m ² |
| B4 | Breathability filter media | 300 mm/s @ 200 Pa |
| B5 | Continuous temperature resistance | 200 °C |
| B6 | Momentary temperature resistance | 220 °C |

Filter equipment parameters

| | | |
|----|--------------------------|--|
| C1 | Number of filter rods | 90 ks |
| C2 | Total filter area | 172 m ² |
| C3 | A/C parameter | 1,01 m ³ /m ² /min |
| C4 | Can velocity | 1,02 m/s |
| C5 | Flow from below the rods | 10 400 m ³ /h |
| C6 | Hose side flow | - m ³ /h |
| C7 | Polluted gas input | <i>into the filter hopper</i> |

Dimensions of the filter part

| | | |
|----|---|----------|
| D1 | X-axis filter size | 2 078 mm |
| D2 | Y-axis filter size | 2 155 mm |
| D3 | The gap between the individual rods | 55 mm |
| D4 | Gap between filter rods with filter walls | 70 mm |
| D5 | Gap between rods and hopper | 100 mm |

Filter media arrangement

| | | |
|----|----------------------------|-----------------|
| E1 | Orientation of filter rods | <i>vertical</i> |
| E2 | Diameter of filter rods | 152 mm |
| E3 | Length of filter rods | 4 000 mm |
| E4 | Rods attachment | <i>snapping</i> |
| E5 | Inlet nozzle shape | <i>venturi</i> |

Regeneration system

| | | |
|----|----------------------------------|-----------------------|
| F1 | Number of regeneration valves | 9 pcs |
| F2 | Size of regeneration valves | 1 1/2° |
| F3 | Total compressed air consumption | 17 Nm ³ /h |
| F4 | Compressed air pressure | 6 bar |

Dimensions of the filtration device

| | | |
|----|--------------------------------------|------------|
| G1 | Total width of the filter | 2 226 mm |
| G2 | Total filter depth | 2 303 mm |
| G3 | Total filter height | 7 990 mm |
| G4 | Weight of the filter device | 4 559 kg |
| G5 | Emergency weight 1/3 hopper | 209 kg |
| G6 | Total weight incl. emergency filling | 4 768 kg |
| G7 | Foot load | 4x 1192 kg |

Dimensions of connecting flanges

| | | |
|----|-------------------------------|--------------|
| H1 | Contaminated gas inlet flange | Ø500 mm |
| H2 | Clean gas outlet flange | 400 x 700 mm |
| H3 | Hopper connecting flange | 250 x 250 mm |
| H4 | Filter foot size | 250 x 250 mm |

Material design of the filter

| | | |
|----|-----------------------------------|-------|
| I1 | Filter chamber material | 11375 |
| I2 | Hopper material | 11375 |
| I3 | Filter housing material thickness | 4 mm |
| I4 | Hopper material thickness | 4 mm |
| I5 | Thickness of stiffeners | 5 mm |
| I6 | Coating system | C4 |

Material of thermal insulation

| | | |
|----|--------------------------------------|------------------------|
| J1 | Type of thermal insulation | mineral wool |
| J2 | Coefficient of thermal conductivity | 0,038 W/m.K |
| J3 | Insulation thickness | 100 mm |
| J4 | Insulation cover | galvanized sheet metal |
| J5 | Total insulation area of the cabinet | 47,7 m ² |
| J6 | Total insulation area of the hopper | 9,2 m ² |

Hopper heating

| | | |
|----|------------------------------------|---------------------------|
| K1 | Hopper heating system | electric resistance cable |
| K2 | The total area of the heated part | 8,5 m ² |
| K3 | Heating power per 1 m ² | 200 W |
| K4 | Total heating power | 1700 W |



TECHNICAL DATA SHEET - G&G Bag HOUSE FILTER

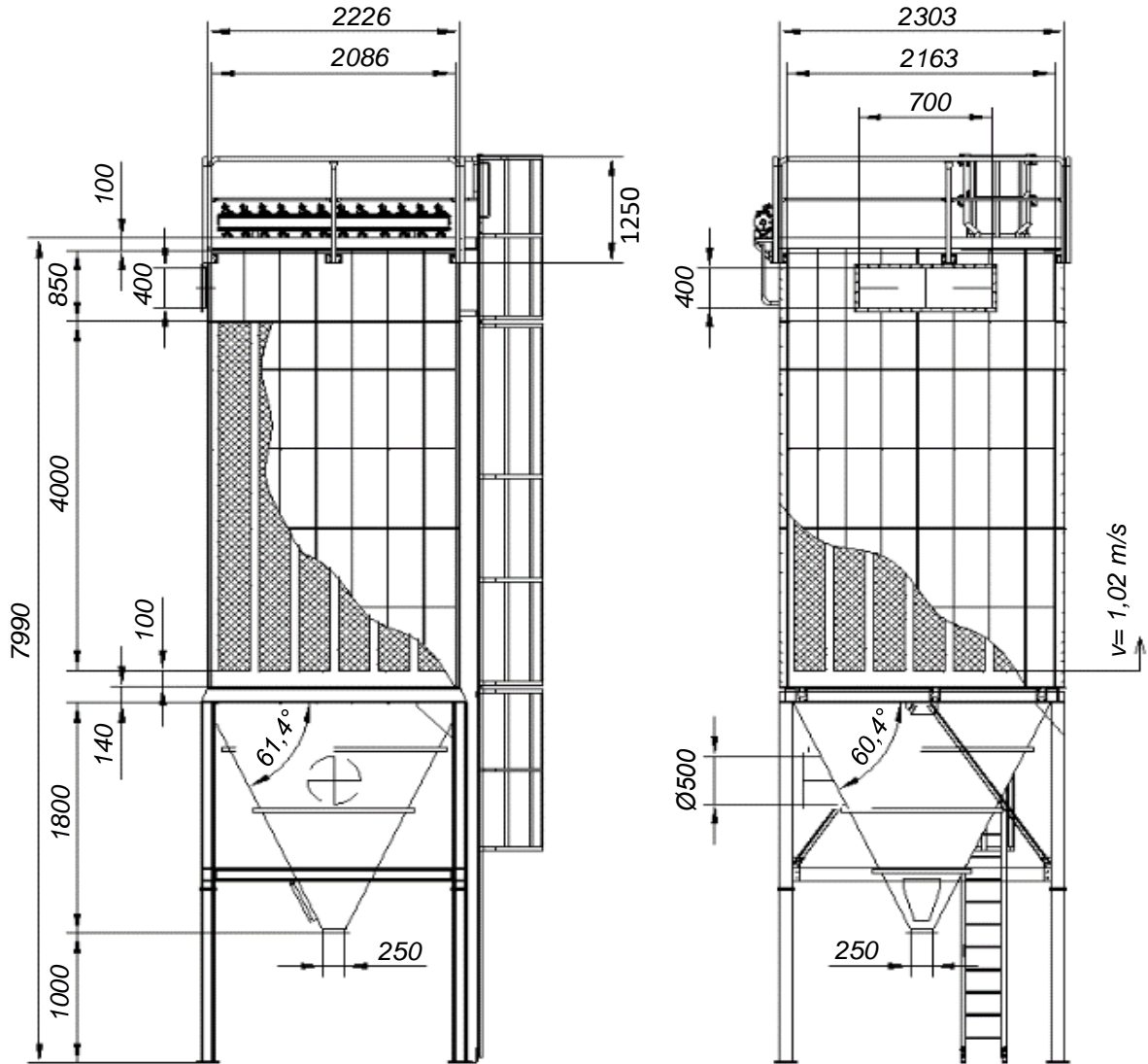
Filter type:

G&G-Bag-HOUSE-9-10-152-40-A

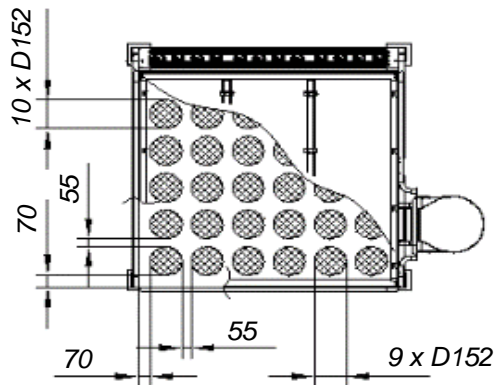
Producer:

G&G filtration CZ, s.r.o.

Orientation drawing



$m=4559 \text{ kg}$



this is an orientation drawing

Files for download

STEP: <https://download.ggfiltration.com/G&G-Bag-HOUSE-9-10-152-40-A.step>

DWG: <https://download.ggfiltration.com/G&G-Bag-HOUSE-9-10-152-40-A.dwg>



G&G filtration CZ, s.r.o.
Hrubínova 1903/9
664 51 Šlapanice
Czech republic

IČO: 05226953
DIČ: CZ05226953
info@gg.cz
info@ggfiltration.com