



G&G Wood BAG

PROFESSIONAL MOBILE EXTRACTORS



Professional mobile extractors for wooden dust

The G&G Wood BAG extractors created by our company are a great help when it comes to extracting single purposed woodworking machines, plastic chipsor and cellulose or threaded dust.

They are great for standalone extracting of powerful CNC machines and are fit for small woodworking workrooms. Their sturdy structure guarantees a long lifespan of their functional parts and the intake of filtrated air from the top of the bag ensures a flawless performance of the vacuum.



MADE IN CZECH AND SLOVAK COMPANY



G&G Wood BAG

DESCRIPTION OF FILTRATION DEVICE

The G&G Wood BAG filtration units created by our company are suitable for demanding customers, who expect nothing short of perfection even when it comes to small exhaust systems. The G&G Wood BAG filtration device is a compact filter fit for wooden, cellulose or threaded material. Its suction power settings range from 1800 m³/h to 7400 m³/h.

The fortified all-metal design of the exhaust transport fan includes a reinforced rotor and fan housing.

We do not give misleading values regarding the maximum suction power (in the case of zero pressure loss) or the maximum pressure (in the case of zero suction/exhaust output). We state the value of the working point when the stated suction power exceeds the pressure losses of the filtration medium and the resistance of the pipes in practice. The stated values are operating values, i.e. measurable in practice.

Compared with conventional HOBBY mobile solutions filters are our G&G Wood BAG units are designed with an inlet in the upper part of the filter hose. Air flow inside the filter hose, which point from top to bottom, entrains the separated fine dust particles down into the waste bin. The filter medium is regenerated in a natural way – by flowing air.

Within simple mobile filters our conception belong between more expensive ones, however there are some advantages like continuous suction power and long service life of filtration medium and of individual parts of the whole filtration device.

Filtration units G&G Wood BAG are not belong to group of HOBBY sawdust extractors. The G&G Wood BAG vacuums are a great help in professional services, where the high requirements on the suction power and its stability are placed.

APPLICATION



Extraction of smaller carpentry
workroom



Supplement for central sawdust
extraction



Local extraction of woodworking
machines



Local extraction of CNC
machines

G&G Wood BAG-1800

Suction capacity: 1 800 m³/h
Fan pressure: 2 500 Pa
Fan power: 3,0 kW
Filtration area: 4,7 m²
Pipe connection diameter: D200
Flow: top -> down

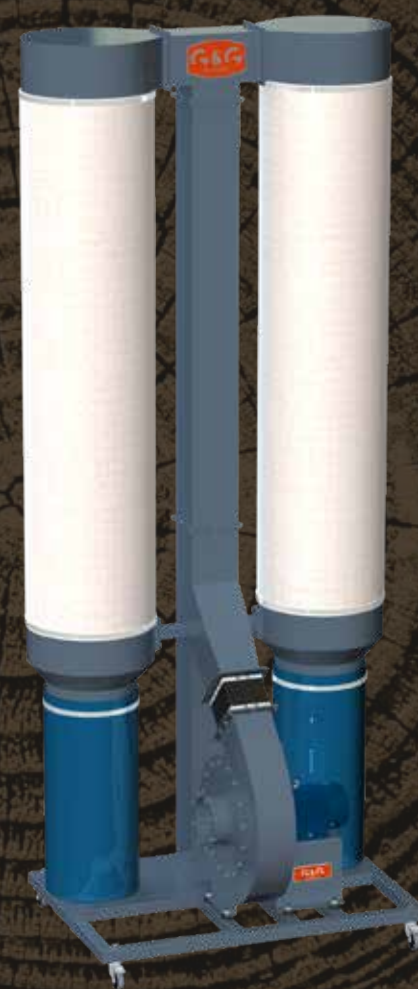
Mobile exhaust and filtration unit for sawdust, cellulose and threaded waste. It is equipped with a high-performance transport fan with a capacity of 1800 m³/h. Sturdy - steel version of the exhaust fan. Inlet of filtered air is in the upper part of filtration hoses. Professional solutions for local extraction of production devices.



G&G Wood BAG-3000

Suction capacity: 3 000 m³/h
Fan pressure: 2 500 Pa
Fan power: 4,0 kW
Filtration area: 9,4 m²
Pipe connection diameter: D225
Flow: top -> down

Mobile exhaust and filtration unit for sawdust, cellulose and threaded waste. It is equipped with a high-performance transport fan with a capacity of 3000 m³/h. Sturdy - steel version of the exhaust fan. Inlet of filtered air is in the upper part of filtration hoses. Professional solutions for local extraction of production devices.



G&G Wood BAG-5000

Suction capacity: 5 000 m³/h

Fan pressure: 2 500 Pa

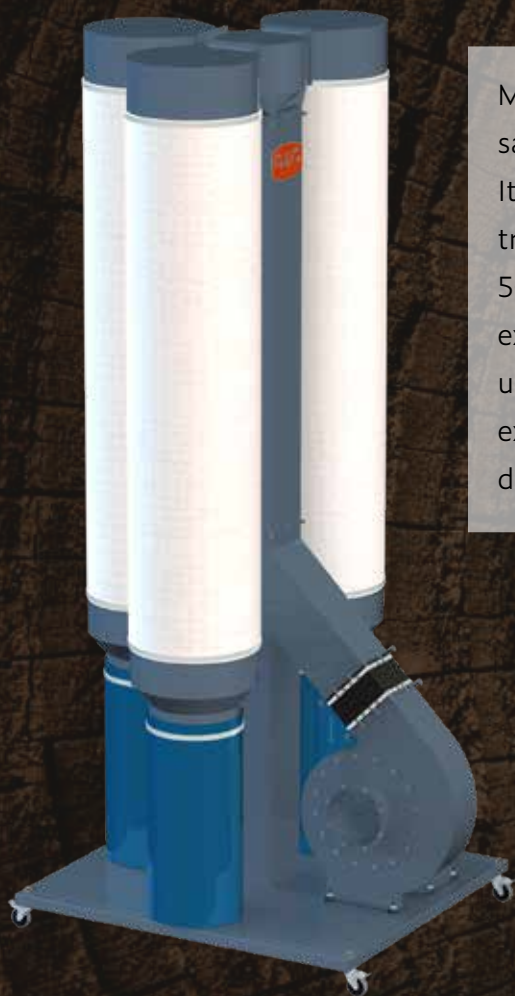
Fan power: 7,5 kW

Filtration area: 14,1 m²

Pipe connection diameter: D280

Flow: top -> down

Mobile exhaust and filtration unit for sawdust, cellulose and threaded waste. It is equipped with a high-performance transport fan with a capacity of 5000 m³/h. Sturdy - steel version of the exhaust fan. Inlet of filtered air is in the upper part of filtration hoses. Powerful exhaust unit for a group of production devices.



G&G Wood BAG-7400

Suction capacity: 7 400 m³/h

Fan pressure: 2 500 Pa

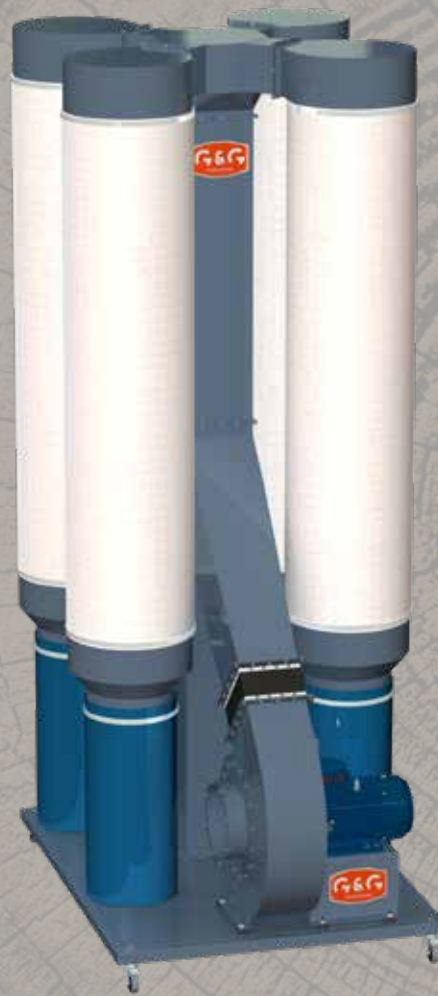
Fan power: 11,0 kW

Filtration area: 18,8 m²

Pipe connection diameter: D355

Flow: top -> down

Mobile exhaust and filtration unit for sawdust, cellulose and threaded waste. It is equipped with a high-performance transport fan with a capacity of 7400 m³/h. Sturdy - steel version of the exhaust fan. Inlet of filtered air is in the upper part of filtration hoses. Powerful exhaust unit for a group of production devices, CNC or central extraction of service.



Other products G&G



Dedusting of biomass boilers



Filtration devices



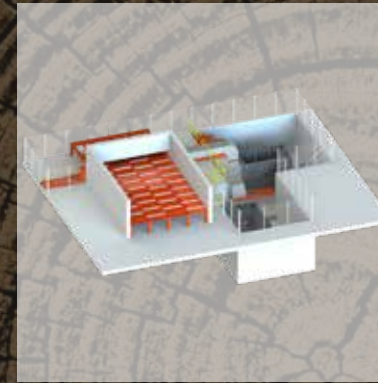
Sawdust and wood chip silo



Screw conveyors



Cyclone separators



Hydraulic floors



Rotary feeders



Closing claps



Transport fans



G&G filtration, s.r.o.

manufacturing plant
Podtureň-Roveň 215
033 01 Liptovský Hrádok
Slovenská republika
info@ggfiltration.com
www.ggfiltration.sk



G&G filtration CZ, s.r.o.

Brno – trade representation for the EU
Hviezdoslavova 309/7
627 00 Brno – Slatina
Česká republika
info@ggf.cz
www.ggfiltration.cz



G&G filtration CZ, s.r.o.

Pelhřimov – division Engineering
Příkopy 25
393 01 Pelhřimov
Česká republika
info@ggf.cz
www.ggfiltration.cz/engineering/

